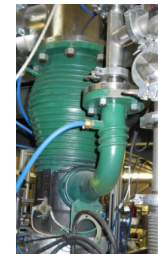


## Microwave Furnace:

# HT-6MF1-HV

*Bottom Loading 6 kW Microwave Application Chamber with high vacuum atmosphere reduction for melting, sintering, drying, and casting.*



### Specifications:

Spec:	Description:
Microwave Power:	Single 6kW Microwave Generator @ 2450 Mhz.
Electrical Power:	220 VAC 3φ @ 30 Amps.
Temperature Measurement:	Dual color optical pyrometer and infra-red insulation measurement.
Vacuum:	Rotary vane pump for achieving $5 \times 10^{-2}$ Torr in 30 minutes. Diffusion pump capable of $1 \times 10^{-5}$ Torr in 45 minutes.
Interface:	Manual controls or complete ramp/soak PID temperature stepped program control with data logging.
Maximum Temperature	2200°C
Spare Ports:	2.75 CF (4), 6.00 CF (1)
Vessel Construction:	1/4" Stainless Steel
Vessel Size:	8.4 ft <sup>3</sup> (24" Diameter x 32" Long)
Hot Zone:	16" Diameter x 20" Height
Shell Cooling:	Yes
Purge Gas:	Argon / Nitrogen
Pressure Measurement:	Manometer, Convection Gauge, Cold Cathode Gauge
Pressure Relief:	Safety relief @ 5psi.
Price:	Call for quote